



# SECURITY SOLUTION FOR

## सुरक्षा सरहद से घर तक

### COMPANY BACKGROUND

An epitome of 'Made in India' security products, Sparsh is redefining the way Indian electronic security manufacturing has evolved over the last decade. Sparsh started its journey ~15 years ago with the vision of making India a destination for design and manufacturing of advanced security solutions.

The company truly embodies a vision of 'building India' and 'building in India' with ~7% of its annual revenue directed towards R&D. With one of the largest in-house R&D centres for CCTV solutions and state-of-the-art manufacturing units building products to global standards, Sparsh has won many accolades and awards including the 'National MSME Award for Quality'.

Despite the pandemic, due to its focus on innovation and quality, and support of government policies, the company has achieved a CAGR of ~80% from 2019 to 2021.

To continue the 'Make in India' push, Sparsh has signed an MOU with Uttarakhand govt subsidiary SIDCUL to set up an electronics manufacturing cluster (EMC) in Kashipur, District Udham Singh Nagar. The new facility will have the capacity to produce 1 million cameras per month.



1<sup>st</sup> India's 1<sup>st</sup> CCTV Cameras manufacturer in 2008



Top 2 Ranked No.2 Indian CCTV Brand (IHS 2021)



Govt. Policies Leading success story under Make In India by DPIIT & Ministry of Commerce and Industry (CIM)



Tailor Made Products and solutions for Sarhad se Ghar Tak.

www.sparshsecuritech.com

### SPARSH'S CORE BUSINESS

Sparsh has product & solutions for all video surveillance requirements

#### HD CAMERAS



Fixed Dome



Fixed Bullet



VF Bullet



VF Dome



Color+ Dome



Color+ Bullet

#### IP CAMERAS



Motorized Dome



Vandal Dome



Fixed Dome



VF Bullet



Motorized Bullet

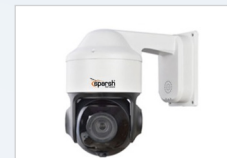


Fixed Bullet

#### PTZ CAMERAS



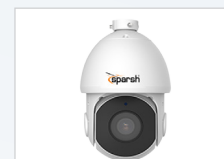
IR Speed Dome



Smart IP PTZ



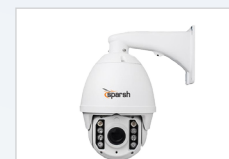
Mini PTZ



IR Dome PTZ



Super Starlight PTZ



IR PTZ

#### SOFTWARE SOLUTIONS



ANPR



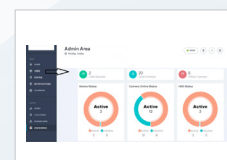
Face Recognition



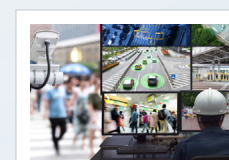
Speed Detection



Video Management



Health Monitoring



Artificial Intelligent

www.sparshsecuritech.com

#### XVR AND NVR



4/8CH XVR



4/8/16CH XVR



8/16CH 1 SATA NVR



16/32 2 SATA NVR



16/32/64CH 4 SATA NVR



32/64/128CH 8 & 16 SATA NVR

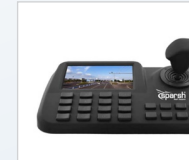
#### ACCESSORIES



IR ILLUMINATOR



4/8/16CH POWER SUPPLY



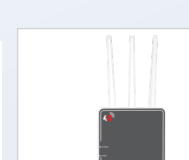
JOYSTICK



AUDIO MIC



OUTDOOR HOUSING



5G/4G ROUTER

www.sparshsecuritech.com

#SURAKSHASARHADSEGHARTAK





**India का अपना CCTV**

For more information, please contact:



PRODUCT CATALOGUE

www.sparshsecuritech.com

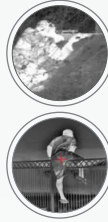


**BORDER/DEFENSE**

**SURVEILLANCE SOLUTION**

With its powerful functions, Sparsh Intelligent Defense Security Solution is suitable for various applications that require high-performing, easy-to-use and scalable AI camera, and Face Recognition system at Border areas. The robust solution consists of border violation solution, border control, access control in high security areas.

- Edge-based intrusion detection system
- Classifies humans and vehicles
- Multiple detection scenarios
- PTZ auto tracking for automatic close-ups
- Bounding box metadata overlay.
- NDAA Compliant & Non-Chinese Chipset Cameras



**PRODUCT IN FOCUS**



Thermal Camera up to 5 Km Range



IP Camera with On Edge AI



IP Speakers for Remot Warning and Announcement



**SAFE CITY/SMART CITY**

**TRAFFIC SOLUTION- ITMS**

- Environmental monitoring
- Law enforcement
- Urban mobility
- Intelligent Traffic Monitor is useful for:
  - Traffic control and monitoring
  - Intersection monitoring
  - Traffic metrics/analysis
- Current situation on the roads
- Making traffic lights more intelligent
- Increasing throughput of vehicles
- Traffic/ITS Planning for cities and roadways

**PRODUCT IN FOCUS**



Integrated RADAR ANPR Camera Speed up to 200 KM/h



PTZ Camera up to 500 mtr.



ANPR BOX camera up to 100 FPS



**PUBLIC TRANSPORT - RAILWAYS**

**METRO/BUSES**

- Passenger safety
- Operational efficiency and passenger satisfaction
- Incident investigations and identifications
- Built-in intelligence, offering people counting , Fatigue detection, Front vehicle collision, vehicle proximity, pedestrian and Human Detection etc.
- RDSO Complaint Product for Railways



**PRODUCT IN FOCUS**



ON board Camera with Face Recognition Built-in



Vibration & shockproof Camera with EN50155 Protection



Mobile NVR- Aviation Grade, With IRNSS GPS Integrated



**CRITICAL INFRASTRUCTURE - OIL & GAS, ENERGY**

**& GAS, ENERGY**

- Integrated technology to protect critical assets
  - Intrusion, interruption, injury are main threats to productivity, profitability, and employee safety in critical operations.
  - Solutions for hazardous areas
- These are main Areas:
- Power and Energy
  - Oil and Gas
  - Communication towers



**PRODUCT IN FOCUS**



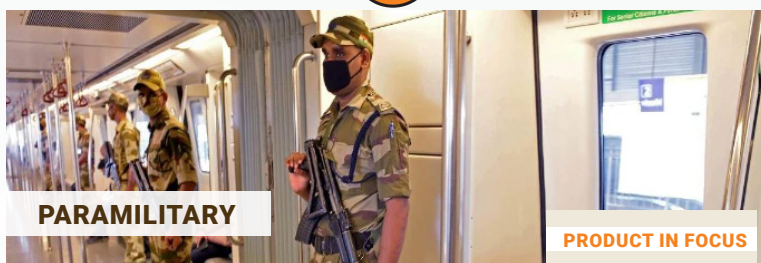
4G/5G Cameras for Remote & Critical Site such Communication Towers



36X PTZ camera with EMI & EMC Certification for Power Grids



Ex Proof Bullet Cameras with ATEX & CCQE Approvals



**PARAMILITARY**

- Security with IP Cameras for Paramilitary office Buildings
- Face recognition and ANPR solutions at Border areas
- Cameras as per BSF QR
- Temperature Detection Camera for Airport or Critical Buildings for
- temperature measurements .
- Artificial Intelligent for Airport Security

**PRODUCT IN FOCUS**



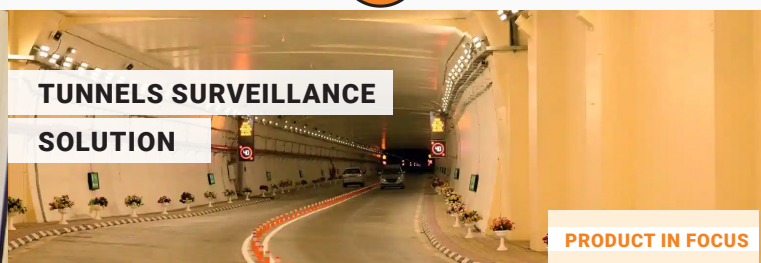
Integrated RADAR ANPR Camera Speed up to 200 KM/h



Stainless Steel PTZ Camera 36X



Stainless Steel Bullet Camera with 80 Meter Night Vision & 10X Zoom



**TUNNELS SURVEILLANCE SOLUTION**

- Although the probability of having an automobile accident in a tunnel is relatively low, accidents are a constant safety hazard because every accident has much more serious consequences in a tunnel than outdoors due to the narrow space and limited emergency walkways.
- Cameras with corrosion proof & Blast Proof
- High Resolution Cameras for Walkways
- PTZ camera at Entry/Exit of tunnel.
- Speed Detection & ANPR Camera

**PRODUCT IN FOCUS**



Integrated RADAR ANPR Camera Speed up to 200 KM/h



Stainless Steel PTZ Camera 36X



Stainless Steel Bullet Camera with 80 Meter Night Vision & 10X Zoom



**AVIATION AIRPORTS SMARTER PORTS**

- Sparsh airport solution provides face recognition and people counting on entry and exit gates.
- Intrusion protection- entrances and exits , perimeters
- Passenger and employee safety
- Operational efficiency and passenger satisfaction
- Incident investigations and identifications
- Built-in intelligence, offering people counting etc.

**PRODUCT IN FOCUS**



PTZ Camera upto 30X Auto Tracking



ANPR Camera for Container or Rail Car Number Identification



High-Definition Dome & Bullet Cameras



**BANKS - ATMS**

- Surveillance solutions for security and efficiency
- By protecting your ATM fleet with Mobile NVR & Cameras
- Hidden Pin Hole Camera for ATM
- Vandal Proof Cameras for ATM & Branches
- DVR/NVR with Alarm Integration such as Vibration Sensors, Glass Break Etc.
- Health Monitoring Solution for Head Office

**PRODUCT IN FOCUS**



Hidden Camera



Vibration & shockproof Camera with EN50155 Protection



Mobile NVR- Aviation Grade, With IRNSS GPS Integrated

